

there will be a
 away with these
 that is where we a
 In the endgame
 prison claim citizens at
 cast, in regime after regime
 union leaders, well-known per
 At this stage, the regime stan
 state," "enemies of the people," "tra
 At this point there are likely to be show trials
 withheld from the prisoner, or secret trials, for "security
 Citizens are gradually stripped of elements of due process. The
 independent judicial system is bypassed altogether because a
 "people's court" or military tribunal system has been revived or
 newly established alongside it. The message at this point is that no

Want to join us
 at the next meeting?
 Scan this QR code
 for more details
 about the
 Pikes Peak
 Zine Club.



<https://discord.com/invite/HYbEf947fD>

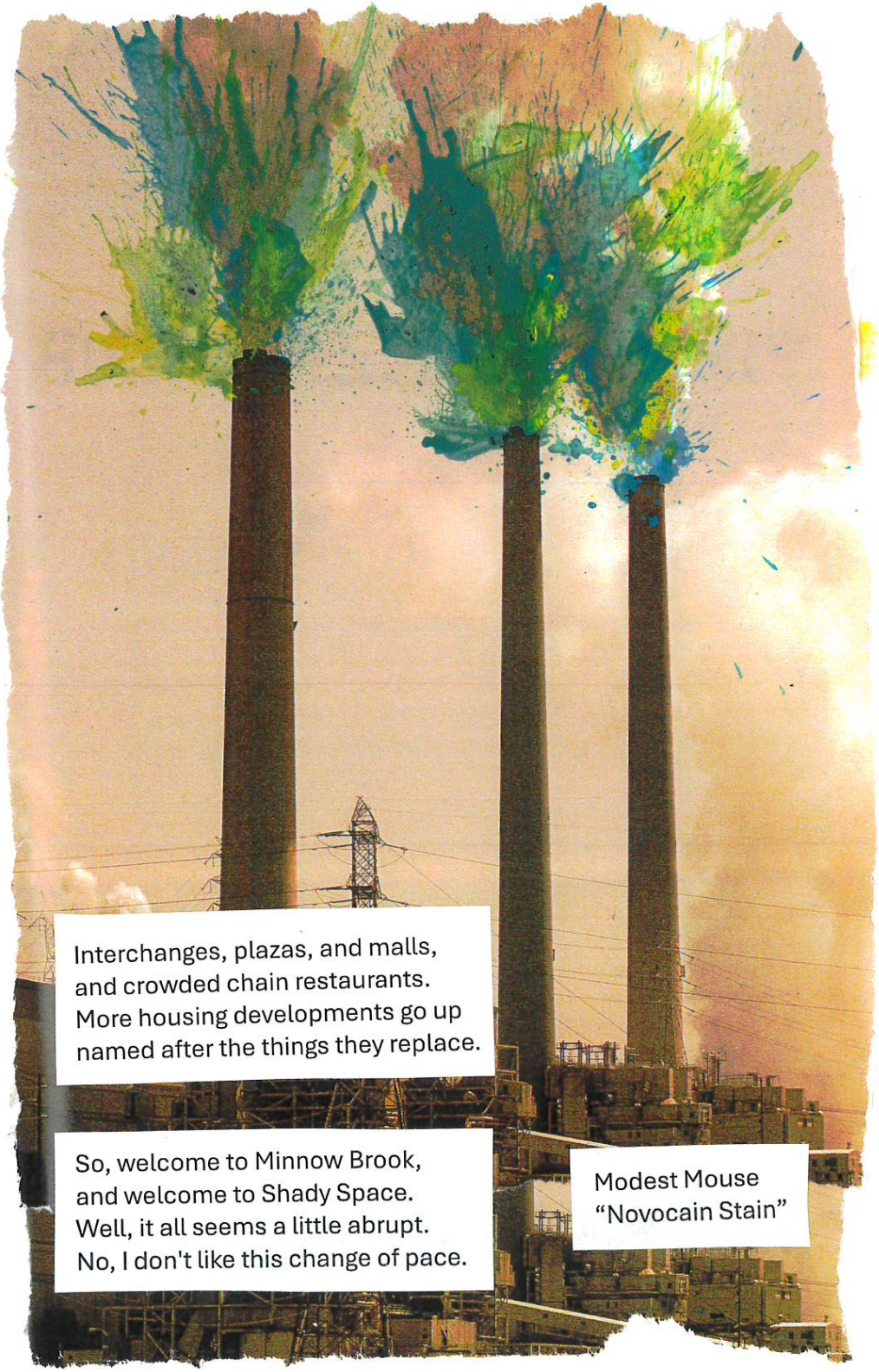



PPZC

PIKES PEAK ZINE CLUB




WE'RE
 NEVER
 TRASH.
 PLEASE
 RECYCLE.



Interchanges, plazas, and malls,
and crowded chain restaurants.
More housing developments go up
named after the things they replace.

So, welcome to Minnow Brook,
and welcome to Shady Space.
Well, it all seems a little abrupt.
No, I don't like this change of pace.

Modest Mouse
"Novocain Stain"

What is SOLASTALGIA? Have you felt it before?

Nostalgia is the homesickness you feel when you are away from home.
Solastalgia is the homesickness you feel when you are still at home.

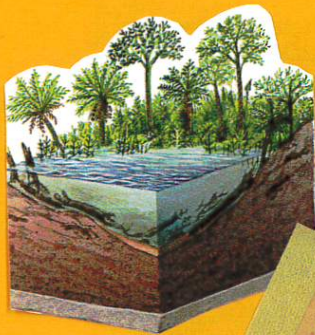
Nostalgia is often thought of as a sense longing for the past: a
sometimes-uncomfortable emotion of remembering what used to be
and aching to return. Similarly, solastalgia describes the experience of
missing or wanting, but due to a change in environment rather than a
change in time and place.

Solastalgia the grief or anxiety caused by the transformation of your
familiar surroundings. A creek bed covered by a concrete parking lot.
Trees turned to office suites and apartment complexes. Highways with
extra lanes where grass used to grow. The unease of realizing that the
seasons don't feel the same as they did when you were a child.

Solastalgia is a concept that gives greater meaning and clarity to
environmentally induced distress. The Latin *solacium*, meaning
"comfort", is combined with the Greek root *-algia*, meaning "pain".
The term was first introduced by Glenn Albrecht in 2003 at Ecohealth
Conference in Montreal. He defined solastalgia as "the pain or distress
caused by the loss of, or inability to derive solace connected to the
negatively perceived state of one's home environment". This describes
the unique melancholy of loss from environmental change.

A place that was once a source of comfort is forever altered, along with
one's sense of security or even one's identity. Like a period of mourning
or bereavement, solastalgia is disorientation from changes in the
physical environment that connect someone to their roots.





Adapt or Die

Here is how climate change is affecting some animals.



Polar bears walk on sea ice to find food. Less ice means it's harder to hunt. Polar bears may die out.



The gang-gang cockatoo's habitat is getting hotter. These birds are growing bigger beaks. This helps them cool down.

The Tree Lover's Stamp of Approval

The Forest Stewardship Council (FSC) label on tree products means that the forests from which the product was produced are managed responsibly. The certification comes with standards that mean trees are maintained as a sustainable resource. In short, as the FSC itself says, by choosing products with the FSC label, you are helping to take care of the world's forests.



Australia saw huge fires in 2019 and 2020. Many koalas died. Others lost their homes.

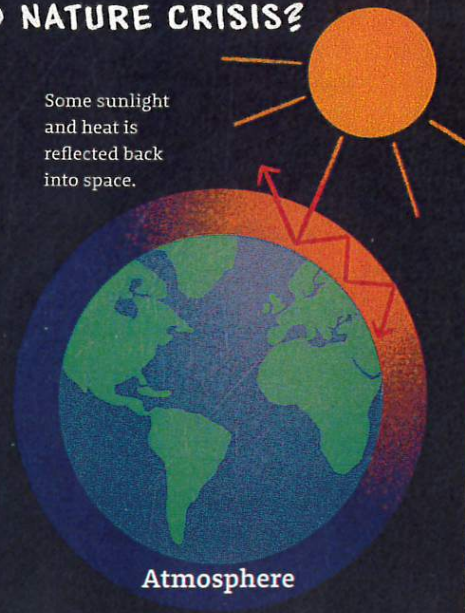
The best way to start is with one achievable goal (for example, signing up to a community action group, cutting out beef, or committing to only buying sustainable or thrifted clothes you'll wear for years) and go from there. It's not about being a "perfect" person or holding others to that standard. Be kind to others, whatever stage they're at, and remember, everyone has a different level of privilege and can't always make the same changes you can.

WHAT IS THE CLIMATE AND NATURE CRISIS?

Put simply, humans burning fossil fuels and destroying nature is causing the earth to heat rapidly. Since the Industrial Revolution, humans began to burn vast amounts of fossil fuels to run machines, power our homes, and fuel our vehicles. Currently in the 2020s, we are using more fossil fuels faster than ever before.

In the last one hundred years, Earth's heat has increased by about 1.2 degrees Celsius. That doesn't sound like much, but it's already having devastating global effects such as extreme weather and uninhabitable heat, drought, and flooding. This affects absolutely everything from food production and water access, to people becoming climate refugees and more animals being pushed to extinction. This is why it's so important we do everything possible as a species to limit global heating as much as we can, as quickly as we can.

Some sunlight and heat is reflected back into space.



Greenhouse gases such as CO₂ trap the heat and it can't escape, causing the earth to warm.

We need the greenhouse effect or we would freeze, but humans are causing the earth to heat *too quickly*.





Climate-Friendly Eating

What we eat has a big impact.

Eat Less Meat

Raising animals produces a lot of greenhouse gases.

Switch Your Milk

Soy, oat, and nut milks are better for the planet.

Stick to Plants

They're good for you, and good for the planet.

Buy Local Foods in Season

Foods grown nearby don't need to be shipped as far.

Waste Less

When you waste food, you waste the energy used to produce it.

What You Can Do Today

- Go for lentils. They are the best-in-class protein vegetable that you can eat, and they have a puny carbon footprint.
- Swap a high-acid meal of meats for an alkaline meal of vegetables.
- Going veg doesn't have to be all-in. Even splitting sandwich or taco fillings to reduce meats can make a big difference.
- Look for vegetables beyond the usually limited selection at supermarkets. Farmers' markets and online shopping can help expand your vegetable grocery list.
- Experiment with cooking different kinds of vegetables.

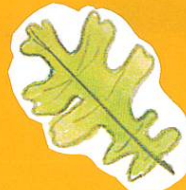
GOING,

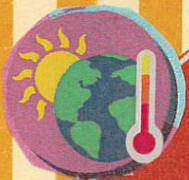


GOING,



GONE.





“Remember that there is nothing ‘individual’ about individual action: it is the vital building block from which social transformation is made possible.”

—Stuart Capstick and Lorraine Whitmarsh

Essay from *The Climate Book*,
created by Greta Thunberg

Make Your Voice Heard

Our elected officials have a duty to listen. Tell them how you feel about climate change. What new laws would you like to see? You can write a letter or use social media.



Energy from the Sun is **absorbed** by plants.

Plant-eating animals eat plants.

Meat-eating animals eat the plant-eating animals.



The natural energy chain begins with the Sun.

Our Limited Options

There used to be many different types of plants from which to feed people. However, in the past century, as farmers began to refine their crops to those that were higher yielding, about 75 percent of the world’s plant genetic diversity has been erased. Now, most of our food supply is from only twelve plants and five animal species:

PLANTS

1. Wheat
2. Rice
3. Corn
4. Sugarcane
5. Soy
6. Potatoes
7. Cassava
8. Palm
9. Millet
10. Sorghum
11. Groundnuts
12. Sweet potatoes



ANIMALS

1. Chicken
2. Pig
3. Cow
4. Buffalo
5. Goat

MONOCULTURE VS. POLY CULTURE

Monoculture farming is when a single crop is planted and grown on the same land, whereas polyculture farming means growing different crops on the same land by either rotating them or growing them next to one another. Polyculture builds healthier soil because it’s adding a variety of nutrients to the soil from the different crops grown.

How Long Will Fossil Fuels Last?

Fossil Fuel	Years it Will Last
 Coal	155
 Gas	60
 Oil	40

PESTICIDES THE POISONS WE EAT

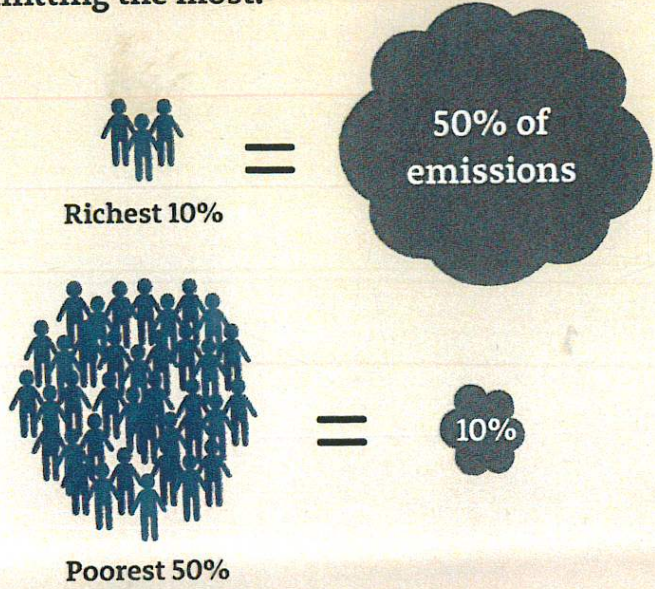


I warn every animal on this farm to keep his eyes very wide open.

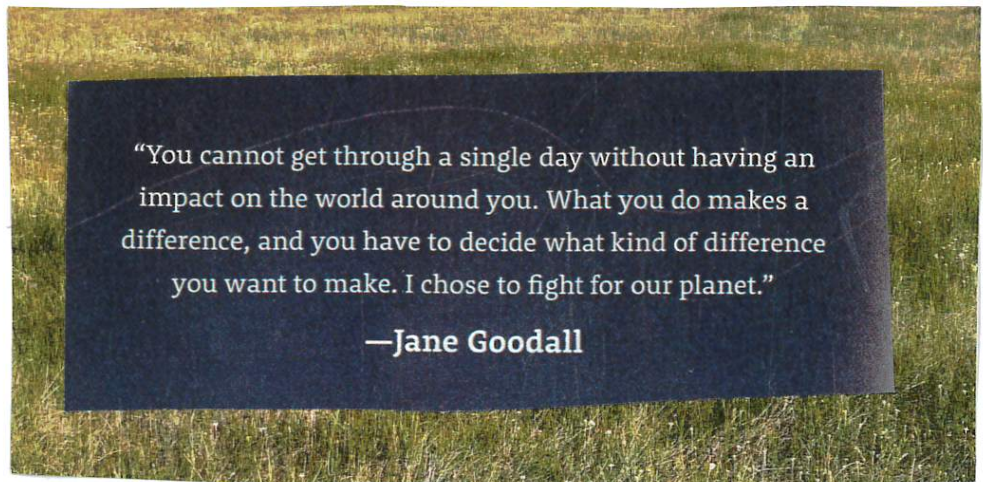
SQUEALER,
in George Orwell’s *Animal Farm*



Who is emitting the most?



Did you know that just 10 percent of the wealthiest people on Earth are responsible for half of global emissions? And the poorest 50 percent of people on Earth only emit 10 percent? Around just 100 companies are responsible for 71 percent of global emissions. It is the wealthiest and most powerful companies that need to change their ways. Blaming population growth is not effective, as not everyone has the same impact.



“You cannot get through a single day without having an impact on the world around you. What you do makes a difference, and you have to decide what kind of difference you want to make. I chose to fight for our planet.”

—Jane Goodall



Garbage from the Great Pacific Garbage Patch often washes up on beaches.



FACT
It can take 1,000 years for some types of plastic to break down in a landfill!

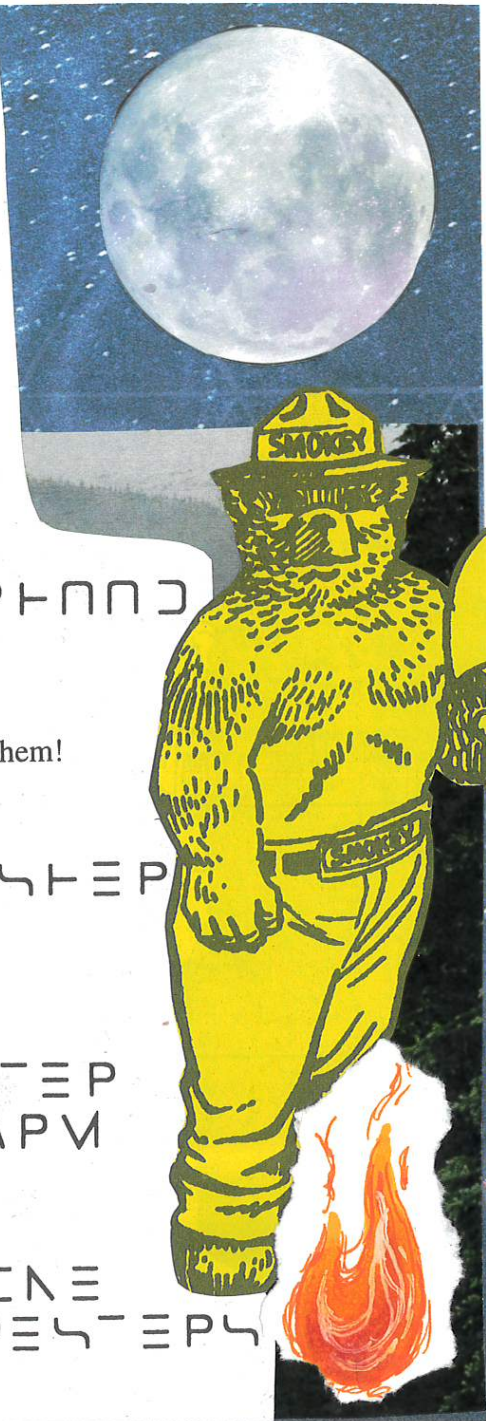
ADD-A-LINE

Add lines to complete letters in these words to discover objects threatened by fire . . .

WOOD
 AN:MA _ S
 TDL S III
 P III III
 WLS T III S
 WKA ' S
 U III U III
 I III A III S
 GPAS S
 S TDL _ S
 N E:GT BOP T O O K
 S ' DP III S

. . . and things that can protect them!

WATER
 E / T:NGL:STEP
 TDL S III
 STDL III
 PAK E
 E:PEE:GT E P
 S MNYE A AP M
 PANGEP S
 S MNY III
 E:PEE III NG:NE
 S PAK APPE S T E P S



Comparing Energy Sources

Energy Source	Renewable	Sustainable
Solar energy	✓	✓
Wind energy	✓	✓
Water energy	✓	✓
Nuclear energy	x	x
Biofuels	✓	✓
Fossil fuels	x	x

Progress

IS

Testing the
BOUNDARY



It seemed that fossil fuels had changed the world for the better, but when people realized that they wouldn't last forever, the trouble began. Wars broke out over the remaining oil supplies. Lots of lives were lost.

FIGHTING FOR FUEL

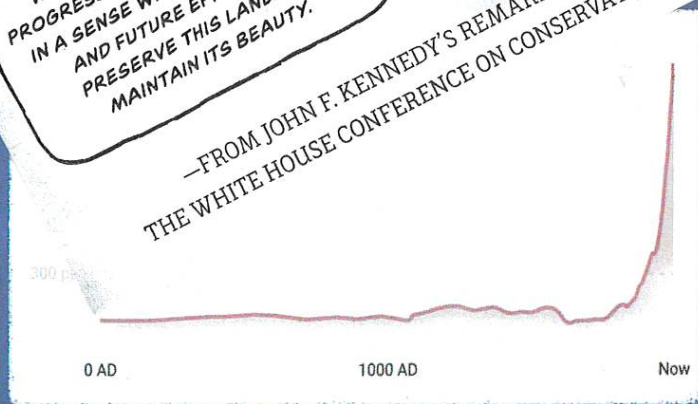


Bees are an important pollinator.

I CAN THINK OF NO MORE SUITABLE EFFORT FOR AN ADMINISTRATION WHICH IS CONCERNED WITH PROGRESS THAN TO BE IDENTIFIED IN A SENSE WITH PAST EFFORTS AND FUTURE EFFORTS TO PRESERVE THIS LAND AND MAINTAIN ITS BEAUTY.

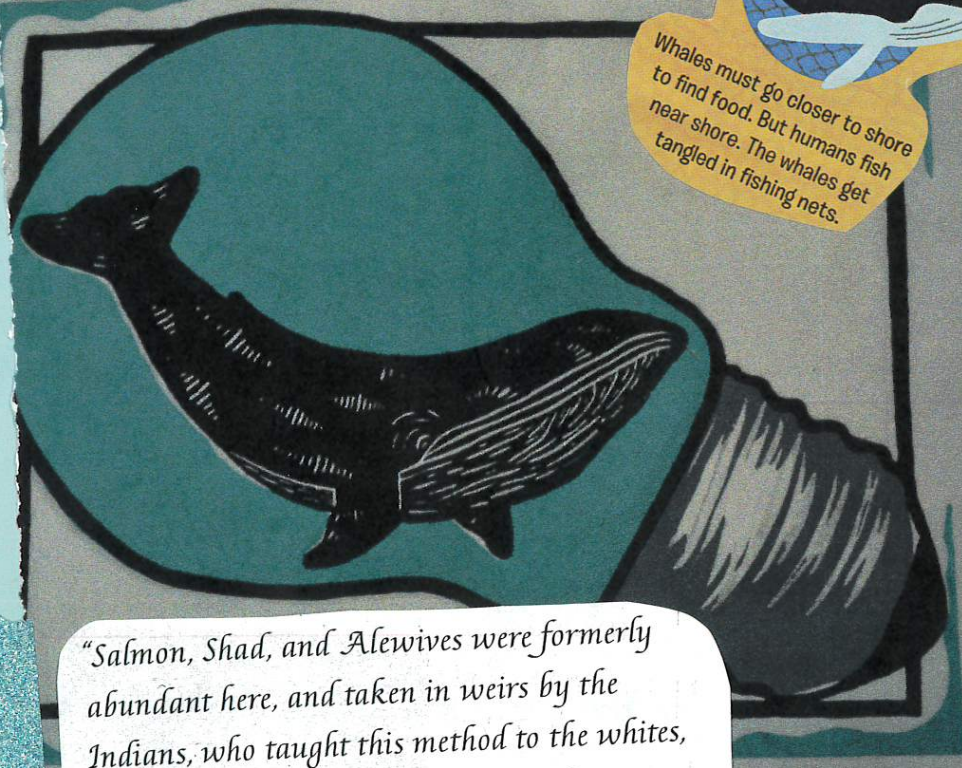


—FROM JOHN F. KENNEDY'S REMARKS TO THE WHITE HOUSE CONFERENCE ON CONSERVATION



Graph reproduced with permission of AimHi Earth, using data from co2levels.org/#sources

- What percentage of CO₂ has built up in your lifetime?**
- AimHi Earth
 - If you're 50: 75% of emissions in lifetime
 - If you're 30: 50% of emissions in lifetime
 - If you're 15: 30% of emissions in lifetime

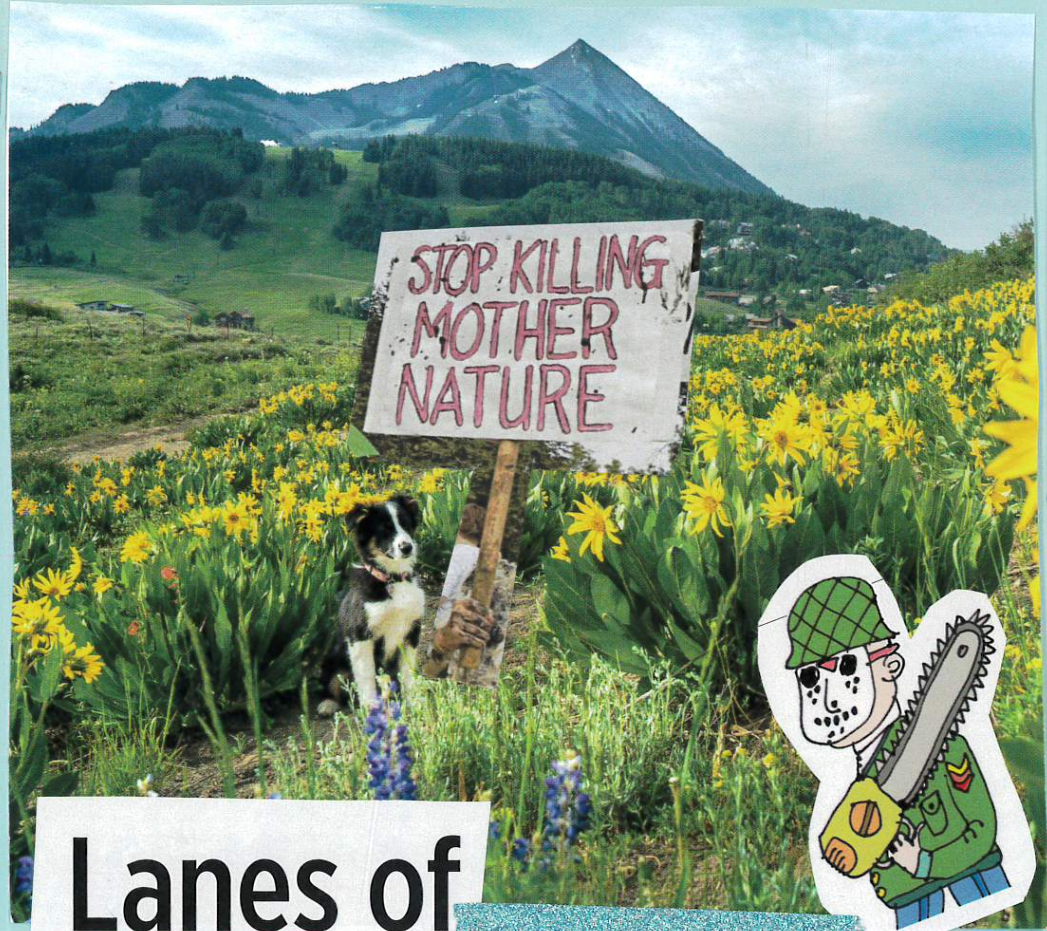
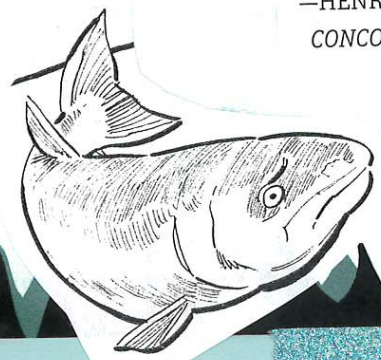


Whales must go closer to shore to find food. But humans fish near shore. The whales get tangled in fishing nets.

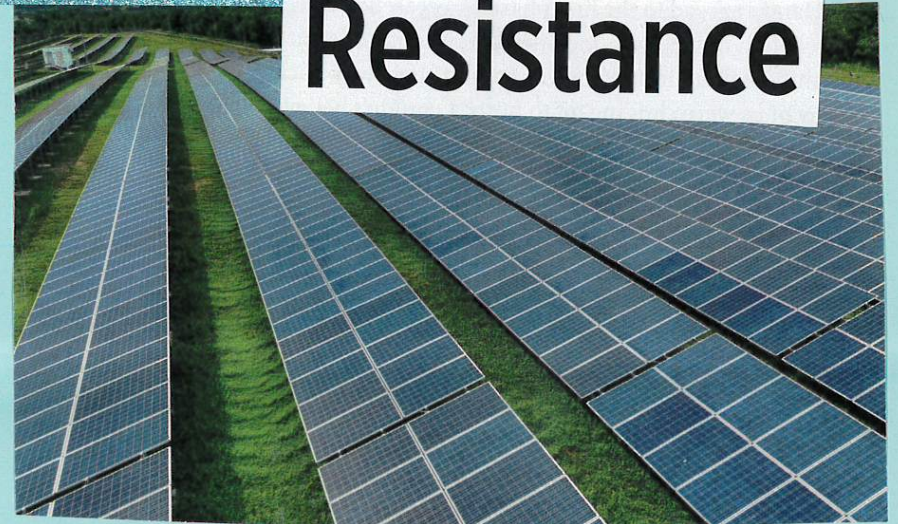
at
Sarah Kline

"Salmon, Shad, and Alewives were formerly abundant here, and taken in weirs by the Indians, who taught this method to the whites, by whom they were used as food and as manure, until the dam . . . and the factories at Lowell, put an end to their migrations hitherward. . . . Poor shad! Where is thy redress?"

—HENRY DAVID THOREAU, *A WEEK ON THE CONCORD AND MERRIMACK RIVERS*, 1849



Lanes of Resistance



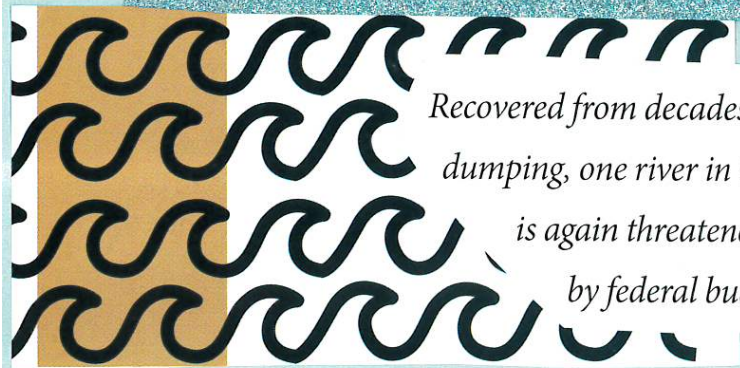


FACT
 Sea levels have risen about 8 in. (20 cm) since 1900. If Earth keeps warming at its current rate, the sea could rise another 6.5 ft. (2 m) by 2100!

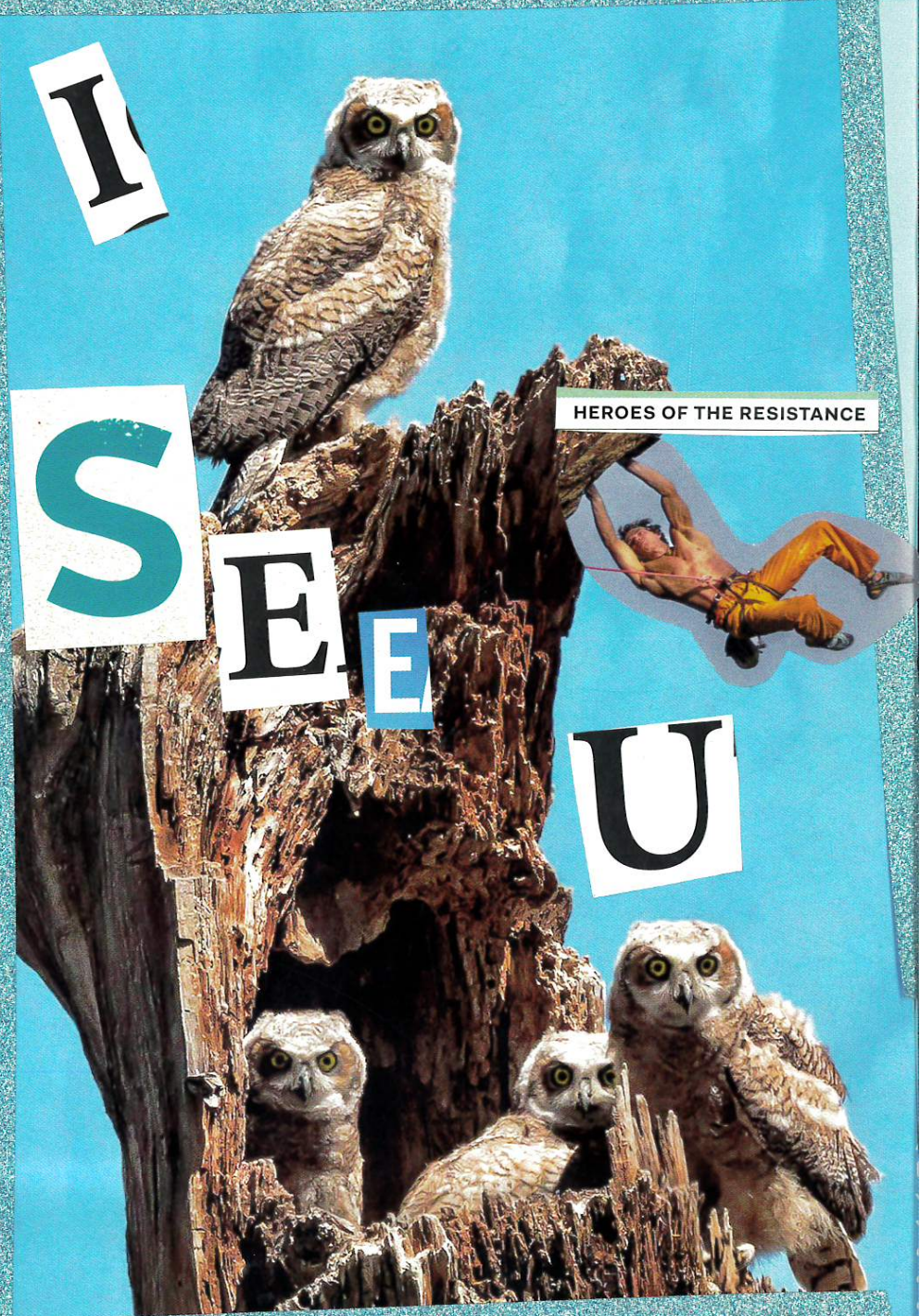
Here are a few easy rules to follow:

How to be mindful around water sources ↓

- Stay on the trails – this helps native plants continue to thrive.
- Respect the space of other fishers and don't play music – this helps each individual enjoy their time on the river or lake.
- Handle the fish quickly – we all enjoy looking at pictures but taking too long to snap one will injure and may kill the fish. Instead, keep your hands wet, grab a quick picture, then release the fish in the water.
- If you are fishing in warmer temperatures, consider leaving the picture or just hiking on hot days – trout become lethargic with the exertion of fighting.



Recovered from decades of industrial waste dumping, one river in the nation's capital is again threatened—this time by federal budget cuts.



HEROES OF THE RESISTANCE

BIG

adventures

QUIZ

ENCOMPASSING MORE THAN
800,000 ACRES OF MOUNTAIN

How much have you learned about climate change? It's time to test your knowledge!

1. What is the name for the blanket of gases surrounding the Earth?

- a. climate
- b. weather
- c. atmosphere

2. What is the main greenhouse gas that cows burp out?

- a. methane
- b. carbon dioxide
- c. water vapor

4. How has the gang-gang cockatoo changed to adapt to climate change?

- a. grown a bigger beak
- b. moved to a cooler area
- c. started eating different foods

DON'T BE
TRASHY

3. Which of these is not a fossil fuel?

- a. coal
- b. wood
- c. natural gas



PLEASE
RECYCLE US



The sun is lowering—it is the magic hour, the fields soaked in gold.



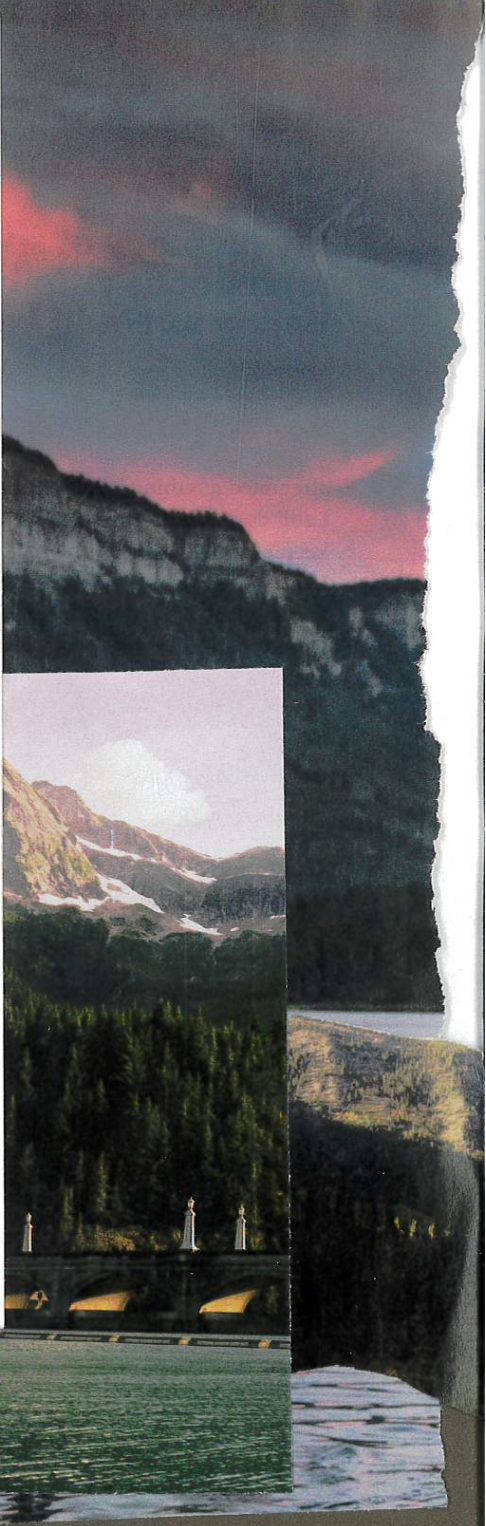
the best advice

Many untold stories define a victory; stories of small triumphs and tragedies that have significant implications for how a war is won or lost.

DO
THINGS
A
BETTER
WAY.



i'm so
sick of
looking
at the
trees
and
wonder-
ing if it's
the last
time i'll
see them



AS SOON AS EUROPEANS ARRIVED IN THE AMERICAS, THEY MADE PLANS TO USE ALL THE AMAZING NATURAL RESOURCES.

TALL WHITE PINES BECAME FIREWOOD AND MASTS FOR SHIPS.